

ST MARY'S CATHOLIC PRIMARY SCHOOL



NEWSLETTER

JUNE 2022

We have almost completed our school year! It doesn't seem that long since September but in just seven weeks the children will be ready to move on to their new classes (after enjoying a few weeks rest of course!).



School Travel Plan - Walk to School!

A big thank you to all who support the school in our 'Walk on Wednesday' campaign. For increased number of children (and their parents) this has become a 'Walk Everyday' campaign which is wonderful. The children who take part are always really enthusiastic and come in each morning keen to tell us if they have been walking / cycling / scooting.

The key issues as you know at our school are the problems associated with restricted parking near the school and for many parents the constraints of a busy day which makes

walking or cycling to school difficult.



When we surveyed the children prior to the first lockdown we found that many of them expressed a desire to cycle to school. In response to this we looked in to the options for suitable cycle storage (this was part of the post building works plan) and as you know we now have a cycle shed in the upper playground. We also arranged for cycling proficiency lessons for the pupils.

It is important for us to remember that the key principle underpinning a school travel plan is to develop sustainable travel which means reducing our reliance on cars whether this is for certain days of the week or for part of the journey to school. The overall aim is to improve the environment and our children's health and enjoyment. Thank you to all who support our 'Walk on School' campaign.

St Mary's Catholic Primary School Street

Enfield Council are proposing a School Street for St Mary's Catholic Primary School on Durants Road between Alexandra Road and Bursland. A 'School Street' is an area transformed into a pedestrian and cycling zone operating Monday to Friday during the school term, during set times at drop-off and pick-up times. School Streets aim to:

- ensure the safety of school students as they arrive to and leave school,
- improve the air quality near the school, and
- encourage more young people to walk and cycle to school.

When the School Street zone is in operation during the designated hours, motor vehicles cannot pass through the zone, except for those who have applied and received a permit or exemption.

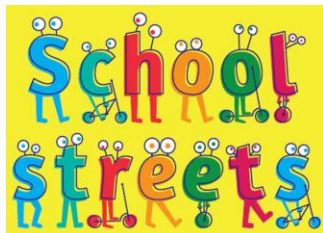
The proposed times of operation for the St Mary's Primary School Street are 8.15am to 9.15am, and 2.30pm to 3.30pm from Monday to Friday during the school terms

only and will be operated manually using gates and marshals with the view to switching to a permanent camera enforced system in the future.

We invite you to take part in the statutory consultation by Sunday 19 June 2022. Please make your representation or objection in writing stating the grounds on which it is being made and quoting the reference TG1500 no later than 11.59pm on Sunday 19 June 2022. You can write to us in any of the following ways:

- via the survey at <https://letstalk.enfield.gov.uk/SchoolStreets>
- by email to healthystreets@enfield.gov.uk, or
- in writing to Healthy Streets, Enfield Council, Silver Street, Enfield, EN13XA.

Further information on School Streets and how they operate can be found at <https://letstalk.enfield.gov.uk/SchoolStreets>.



Parking

Parking difficulties around the school tend to occur when children are being collected from / dropped off to school each day. I do understand how busy Durants Road can be but please make every effort to park responsibly (preferably away from Durants Road) as you drop off / collect your child each day.

I hope that during the rest of this school term while we wait for our school street to be confirmed all parents and carers will act in a responsible manner both for the safety of our children and a positive association with our neighbours. Thankfully so many already do.

If possible please park away from Durants Road and walk with your child!

Please try hard to:

- **Park away from Durants Road and walk with your child.** This is better for your general health and reduces the fumes and pollution around the school. If you can, leave the car at home and try to build the walking time into your child's day. If a child minder or another

family member brings your child to school please encourage them to park away from Durants Road.

- **Please do not sit in the car with the engine running.** This is not good for the health of others.
- **Never park in / across any of the driveways even for a minute.** This is disrespectful and causes a lot of problems for the school with local residents.
- **Never park on the zig-zag lines** during the designated no parking times (please check the signs) or in the disabled bays which are reserved for blue badge holders.

Relationships and Sex Education (RSE / RHE)

Around this time last school year Relationships Education and Health Education became statutory in all primary schools in England. This as you know for us builds on the non-statutory lessons we have always taught in RSE / RHE at St. Mary's.

As previously explained we decided to adopt **Life to the Full** by Ten Ten Resources. We actually originally purchased

this programme for use in the 2019-2020 school year as we felt it supported the work the school was already doing but then the world went into lock down and other priorities took over.



Through their programme, Ten Ten understand the foundational role that parents have in educating and nurturing their children on these matters. Within the programme, they have built in resources which will not only keep you informed about what is being taught in school, but will also give you the opportunity to engage your children in discussion, activity and prayer. Please refer to the school website for the policy and curriculum for RSE / RHE.

www.stmarysenfield.co.uk/about-us/our-school-curriculum

As part of the subscription to Life to the Full an Online Parent Portal is provided for parents.

Parents should visit the following webpage

[Online Parent Portal – Enter \(tntenresources.co.uk\)](http://tntenresources.co.uk)

The parent login is as follows:

Username: st-marys-en3
Password: lady-3

MEI's Calculator Crunch... it's fun and it's free!

Calculator Crunch will be returning this year!

Calculator Crunch is an annual event that takes place over 9 days each summer. Every morning an exciting challenge is released on the site's twitter and webpage, alongside a set of learning resources.

Parents and carers can use the challenge activities with their children at home.

Previous years' resources are available online: [Resource - MEI](https://mei.org.uk)
<https://mei.org.uk>

Stories at Home



Sooperbooks have extended their library and added high quality audiobooks to all of their stories. You can access their free stories and audiobooks here:

<https://sooperbooks.com/bedtime-stories>

Storytime Videos (Islington Libraries)

Islington Library Service have recorded lots of story-time videos for children from Nursery to Year 6.

<https://www.youtube.com/c/islingtoneducationlibraryservicebookvideos>

Thinking Skills

Remember to ask your child which thinking hats they have been using in lessons. Also check to see if they are aware of the current Habit of Mind focus. Some of the children are also using the Thinking Maps – ask your child to see if he / she is aware of the maps.

Online Safety at Home



You might find the following links helpful:

WHAT'S THAT APP ANYWAY?

What even is Fortnite (or Roblox...or Minecraft...)?

The best way to find out is to get your child to show you so

you can see how it works, what happens and if it's appropriate for your family. But here are some sites to help you find out what the experts think of apps, sites and games (there are more at

<https://www.lqfl.net/online-safety/resource-centre?s=32>

Thousands of expert reviews of apps, games and even films from [Common Sense Media](#)

Whatever the app, or the site, or the game, do you know how to stay secure to stay safe? Here are [6 simple steps](#).

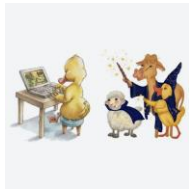
<https://parentsafe.lqfl.net/home>

Digiduck Stories (Childnet)

The five stories in the Digiduck series were created to help parents and teachers educate children aged 3-7 about online safety. The collection includes a ebooks, PDFs, a poster and an interactive app.

As well as the books, there is a Digiduck Activity Menu, that can be found

here: <https://www.childnet.com/resources/digiduck-stories/>



Development of School Building and Site - School Fund



I know you are aware we are always keen to continue to improve our school site.

During the lockdown and in the summer term last school year we replaced the climbing frame with a Fitness Trail. The children continue to make great use of it which is so lovely to see.



We also replaced all of the corridor carpet along the ground floor.

Prior to that we replaced all of the toilets etc in the Reception block.

Four summers ago we replaced the roof to the school kitchen and improved the fencing at the Nursery and Reception part of the school.

In the previous summer holiday we replaced the ceilings and lighting in the main corridor,

offices, Reception Hope, Year 1, Rosary and Year 1, Wisdom classes. We also replaced the lighting in Reception Grace class and in the Nursery.

In the school year prior to that we extended our School Hall to the front and replaced the roof on the Hall. In the previous summer we had a new boiler installed to serve the Year 2, 3 and 4 rooms.

Seven summers ago we renewed some of the toilets in the school and replaced 4 fire doors.

Eight summers ago we renewed the playground surface at the top end of the school site (old carpark area) and the fencing between the school site and the house next door.

Nine summers ago we replaced the flat roof covering on the front of the oldest part of the building and Nursery, renewed the furniture in some of our classrooms and replaced some of the interactive boards (we renewed all of the interactive boards again in recent years).

Ten summers ago we replaced the fence and gates (to increase security) to the front of the school as well as the flooring in the main hall.

Prior to that we replaced all of the back fencing, internal radiators and pipework and

completed the large extension to the school.

Last summer we had a canopy built along the back of the old building (this work was delayed due to the lockdown). We renewed the boiler which serves the oldest part of the school as it had had as many repairs as it could take and needed to be renewed. We also renewed the boiler which serves the Reception classrooms.

Remember your donations to the School Fund greatly assist the school in improving the facilities provided for all of the children.

Thank you to all who have made contributions this year. Up to 31st May 2022 £9,151.00 was collected in School Fund donations.

If you have not made any contribution to the School Fund please consider even making a part payment before the end of the year as your support will make a real difference to what we are able to do for the children.

School Fund costs £2.00 per week / £25.00 per term / £76.00 per year for one child.

For two children School Fund costs £2.50 per week / £32.00 per term / £95.00 per year.

If you have three children in the school School Fund costs £3.00 per week / £38.00 per term / £114.00 per year.



School Uniform

Thank you to the great number of pupils wearing the correct **dark blue summer dress**. Remember it is fine for your child to continue to wear a grey skirt and polo shirt during the summer term or trousers if your child prefers this.

Children are not permitted to wear summer dresses which are not dark blue check (these other light blue dresses are actually the summer uniform of another school).

A number of children are wearing short school uniform trousers which are a little cooler in the warm weather.

Please check your child's uniform. Sometimes children accidentally take home the wrong sweatshirts etc. Try to ensure your child's name is on each item of uniform. During the summer children take off sweat shirts a lot more. If the sweatshirt is

labelled it is much easier to return it to its owner.

It's good for children to be able to wear a hat during the summer when it becomes very warm. **School hats (with neck protection flaps) are now available from the School Office for £3.00**. Children are encouraged to wear these instead of other non - uniform baseball caps which are not permitted.

On PE days children are able to wear their PE uniform. It must however be the correct PE uniform. **Please ensure your child is wearing the correct joggers in school blue. Also your child must wear their school shoes and change into their trainers/plimsolls for their PE sessions.**

Please note that children are not allowed to wear nail varnish or false nails. Rings, bracelets, necklaces must not be worn to school. Lines, logos, Mohican cuts, dye or designs in the hair are not permitted.



Thank you to the great number of parents who ensure their children wear the correct school uniform each day. The majority of children always look very smart.

School Dinners

School meals cost £2.50 per day / £12.50 per week (from September 2016).



Please pay in advance (at least a week in advance) online using the Parent Pay system or ask the Office staff for a Pay Point card.

Remember that if your child has school meals (and is not entitled to free meals) and you don't pay for them the school has to find the money to pay your debt. Always pay for your child's meals.

Your child may be entitled to free meals. To qualify for free school meals parents or guardians must be in receipt of:

- Income support
- Income based job seekers allowance
- Asylum seekers subsistence payment (support under part VI of the Immigration and Asylum Act 1999)
- Child tax credit (but not working tax credit) only and have an annual income of less than £16,190

Phone calls

Your child is welcome to phone home (in emergency only). We

would welcome a voluntary contribution towards the cost of any phone calls your child makes.



Attendance

It's very important that we really continue to try during this new term to improve pupil attendance. Our target is for 98% attendance (our absence was 4.12% at the end of the summer (first half-term) - this is higher than we would like it to be).

The classes with the highest attendance from the beginning of the school year until the end of the first half of the summer term were:

1. 98.71%-Y4, St. Paul
2. 96.85%-Y3, St. Bernadette
3. 96.76%-Y6, St. Catherine
4. 96.70% - Y5, St. Joseph
5. 96.66%-Y5, St. Cecilia
6. 96.46%-Y6, St. Anthony
7. 96.23%-Y1, Rosary
8. 96.17%-Y6, St. Christopher
9. 95.9% - Y1, Wisdom
10. 95.66%-Y4, St. Peter



We are required now also as you know to report on Persistent Absence. The DfE's persistent absence threshold is 10% from Autumn 2015!

The DfE's guidance on the 2014/15 school census explains that from the 2015/2016 academic year onwards, a pupil will be considered to be persistently absent if he/she is away for over 10% of school sessions in an academic year.

Pages 72-73 of the DfE's guidance, linked to above, contains a table which sets out the estimated thresholds that will be used to define persistently absent pupils.

	15 per cent	10 per cent
Half-term 1	10 or more sessions	7 or more sessions
Half term 1-2 (autumn term)	22 or more sessions	14 or more sessions
Half term 1-3	30 or more sessions	20 or more sessions
Half-term 1-4 (autumn term and spring term)	38 or more sessions	25 or more sessions

combined)

Half term 1-5	46 or more sessions	31 or more sessions
------------------	---------------------------	---------------------------

Half term 1-6 (full academic year)	56 or more sessions	38 or more sessions
---	---------------------------	---------------------------

Please (unless of course your child is ill) ensure your child is in school each day.

If your child is away from school it is important that you always let us know to avoid having the absence recorded as unauthorised. Always try to phone us on the day and it is school policy to request a short, written note explaining the absence.

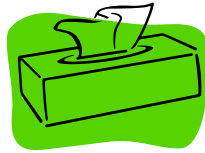


Tissues

We are no longer able to provide tissues for classrooms. Donations of boxes of tissues would be gratefully received. Thank you to parents who have already handed in some boxes.

Unfortunately we are still running low (some noses are running quite a bit at the

moment with hay fever and summer colds).



Be on Time!

Try very hard to ensure your child is on time for school each day and that he/she is picked up promptly at the end of the day.

Allowing your child to be regularly late in the morning and collecting children well after their school time is not good practice. It's good for children to learn good habits of punctuality from a young age.

Again thank you to the numerous parents who ensure their children are on time every day.



Hair etc!

Sometimes we have nit outbreaks during the summer term. Please check your child's hair regularly. Also ensure that long hair is tied back (in school colours please) each day. Remember nits like clean hair too!

Also please watch out for Ringworm and Worms! I know

they sound unpleasant but children do pick these infections up at times.

Summer Sun!

Try to ensure your child wears sun cream during the very warm weather. Remember children spend quite a bit of time outside in the course of the school day. It is important that your child is able to apply his / her own sun cream. You may of course apply the sun cream in the morning before coming to school. We will of course encourage the children to spend time in the shade on very warm days.



Don't forget to log on to the school website -

www.stmarysenfield.co.uk

Our Pupils

We consider ourselves very fortunate in school as children are always happy to talk and offer their ideas, opinions and suggestions. They rightly consider the school to belong to them and always show a great sense of shared responsibility for the school and all that we do together in school.

They of course also reflect the very strong parental

support for the school which continues to be a wonderful strength of the school. Remember, if you ever have any concerns about your child or a school decision, to come and see us straight away (thank you to the majority who always do). We would prefer to know and will always listen and try to help.

It is a good idea to copy in the office address when you e-mail the year group address as the office staff can also pass messages on to the teachers.

nursery@stmarys.enfield.sch.uk

reception@stmarys.enfield.sch.uk

year1@stmarys.enfield.sch.uk

year2@stmarys.enfield.sch.uk

year3@stmarys.enfield.sch.uk

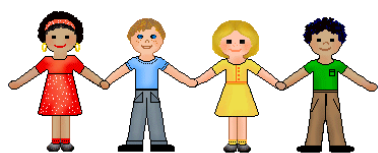
year4@stmarys.enfield.sch.uk

year5@stmarys.enfield.sch.uk

year6@stmarys.enfield.sch.uk

You can always just phone the office too of course.

Wednesday Word



Have you started to read 'The Wednesday Word' yet? *The Wednesday Word* is a gift to you and your family because of your connection with our Catholic school.

Every Wednesday, a 'word' (inspired by the Sunday Gospel) will be suggested for you and your family to talk about in your home.

This weekly Family Time is structured around the Sunday Gospel because evidence shows that Gospel values really do help family relationships to thrive.

Regularly spending quality time with children is without doubt one of the most important aspects of parenting. *The Wednesday Word* seeks to support you in this important task: to help you and your children maintain a special closeness throughout the school years.

The Wednesday Word 'Family Time' leaflet is designed to ensure that all family members feel included. It presents an effective way for even the busiest of parents to enrich relationships with their children through spending a very special 5 or 10 minutes together each week.

We suggest Wednesdays for *Family Time* because it is the day that the Catholic Church dedicates to St Joseph - the

Patron Saint of Families. But rather than miss out, any other night would do just as well.

<http://www.wednesdayword.org/index.html>

Future Dates

Monday 6th June - Years 2-6 classes to Parish Mass at 10am for Feast of Blessed Virgin Mary, Mother of the Church.

Thursday 9th June - Year 5 to Parish Mass at 10am for Feast of Our Lord Jesus Christ the Eternal High Priest.

Sunday 12th June - Feast of the Most Holy Trinity

Monday 13th June - INSET Day - No School

Tuesday 14th June - Additional Holiday for Platinum Jubilee - No School.

Wednesday 15th June - Year 3 to Parish Mass at 10am. District Sports PM.

Sunday 19th June - Feast of The Most Holy Body and Blood of Christ -Fathers' Day.

Monday 20th June - Sports Day for Juniors AM

Tuesday 21st June - Year 3 to Parish Mass at 10am.

Wednesday 22nd June - Class Photographs.

Thursday 23rd June - Sports Day for Infants AM

Friday 24th June-The Most Sacred Heart of Jesus. School Mass. Years 2,3,5 and 6 to attend.

Tuesday 28th June - Year 6 to Parish Mass at 10am.

Wednesday 29th June, Ss Peter and Paul, Apostles -School Mass for Years 1-6

Thursday 30th June - Sports Day for Juniors (if raining previously). Year 3 to theatre.

Friday 1st July - Sports Day for Infants (if raining previously)

Monday 4th July - Forensic Science Workshops (Day 1).

Tuesday 5th July - Year 4 to Parish Mass at 10am.

Wednesday 6th July - Forensic Science Workshops (Day 2)

Thursday 7th July - Year 5 to Parish Mass at 10am.

Thursday 14th July - Year 6 Leavers' Mass, 10am in the church. Leavers' BBQ and Disco, 5-6.30pm.

Friday 15th July - Children visit their new September classes AM.

Monday 18th July - End of Year Class Parties. Last day of School Year for Year 6. Last day for Reception -Year 5 pupils in their current classes.

Early Closing (12.45pm Infants, 1pm Juniors). Own Clothes Day.

Tuesday 19th July - Year 1- Year 6 pupils (September 2022) begin their time in their new classes. New Reception pupils and parents visit.

Wednesday 20th July - New Reception pupils and parents visit.

Thursday 21st July - New Reception pupils and parents visit.

Friday 23rd July - Last day of School Year. Early Closing (12.45pm Infants, 1pm Juniors). **OWN CLOTHES' DAY.**

Thanksgiving for the School Year: School Mass (in memory of Daniel Evans and Mary Ireton) at 10am in Church for Years 2-6.

New Reception pupils and parents visit AM.

No afternoon Nursery session today.

* Please note that dates may change as the year progresses.

I apologise in advance for any inconvenience this may cause.

Own Clothes Day

Thank you to all who supported the Own Clothes' Day before the half-term £236.57 was raised.



The junior children are learning the Hail Holy Queen prayer this term. It is a lovely prayer of praise and petition to Mary, the Mother of God.

You might like to say it at home with your child.



Hail Holy Queen

Hail, Holy Queen, mother of mercy!

Hail, our life, our sweetness and our hope!

To you do we cry, poor banished children of Eve.

To you do we send up our sighs, mourning and weeping in this valley of tears.

Turn then, most gracious advocate, your eyes of mercy towards us.

And after this our exile, show unto us the blessed fruit of your womb, Jesus.

O clement, O loving, O sweet Virgin Mary.

These are some of the prayers we say with the children each day in school. You might like to say these in the morning with your child, at meal times or before he / she goes to bed.

Morning Offering

O My God, you love me,
You are with me night and day.

I want to love you always in all I do and say.

I'll try to please you Father.
Bless me through the day.

Amen

Night Prayer

God our Father, I come to say,

Thank you for your love today.

Thank you for my family,
And all the things you give to me.

Guard me in the dark of night.

And in the morning send your light. Amen.



Grace Before Meals

Bless us O Lord
As we sit together.
Bless the food we eat today.
Bless the hands that made
the food.
Bless us O Lord. Amen.

Grace After Meals

Thank you God
For the food we have eaten.
Thank you God
For all our friends.
Thank you God
For everything.
Thank you God. Amen.



Our School Prayer

This is our school.
May we all live here
Happily together.
May our school be full of
joy.
May love dwell here among us
Every day.

Love of one another,
Love of all people
everywhere,
Love of life itself,
And love of God.

Let us all remember that
As many hands build a house,
So every child
Can make this school
A lovely place. Amen



We are trying to learn / say
The Angelus each day at 12
noon in all classes from Year 2
(from summer term) - Year 6.
This is a wonderful prayer
which reminds us that God the
Son became man in order to
save us.

You might like to say this
prayer with your child at home.
It can be said in the morning,
at noon or in the evening.

The Angelus

The Angel of the Lord declared to
Mary:
And she conceived of the Holy
Spirit.
Hail Mary...

Behold the handmaid of the Lord:
Be it done to me according to your
word.

Hail Mary...

And the Word was made Flesh:
And dwelt among us.

Hail Mary...

Pray for us, O Holy Mother of God.
That we may be made worthy of the
promises of Christ.

Let us Pray.
Pour forth, we beseech you, O Lord,
your grace into our hearts, that we,
to whom the Incarnation of Christ,

your Son, was made known by the
message of an angel, may be brought
by his passion and cross to the glory
of his resurrection, through the
same Christ our Lord. Amen.

May the divine assistance remain
always with us and may the souls of
the faithful departed, through the
mercy of God, rest in peace. Amen.



Christian Meditation

We appreciate what a
challenging time this continues
to be for many children and
their families.

As you know the World
Community for Christian
Meditation (WCCM) has
worked to develop videos which
provide short meditation
sessions which children and
young people can participate in,
whether in school or at home.
These sessions are inspired by
meditation in the tradition of
John Main OSB.

Full details are available
here: <https://www.cathchild.org.uk/meditation-with-children-young-people/>

9 ways parents can support
their child's education at home

**Emma Tibbitts, NACE
Curriculum Adviser (Early**

Years), shares nine ways parents and carers can support their child's education at home.

This blog post is an excerpt from the new NACE Essentials guide for parents and carers of children in the early years - now freely available for all families.

The biggest contribution a parent can make to their child's education is to be interested in and appreciate what they are doing, know what they are interested in, and support them in what they do.

Gentle encouragement, interested questioning, concern when you feel there is a problem, and a habit of showing curiosity about the world yourself are all very important. Talking with and listening to your child are among the most important factors in the development of language.

Specifically, you could:

1. Support your child to develop language

Read with and to your child as often as possible. Have a new word of the day or week at home. Puzzles, logic games, word games and board games all help to develop language.

2. Support your child to extend their knowledge of the world and encourage

discussion

Talk through your day and theirs, and encourage family discussions. Introduce an interesting fact of the week. Give them a broad range of experiences, e.g. exhibitions, music, food.

3. Support your child to develop a range of skills and a balanced perspective

Do not always focus on their obvious skills - encourage them to sample new activities. Praise and value effort and persistence, not just achievement.

4. Support your child to experiment

Give them space and free time to play, experiment and develop hobbies and interests of their own.

5. Support your child to develop their social and emotional needs

Children need to know that you are proud of who they are and not what they achieve. They need to be allowed to fail and make mistakes, and develop strategies to cope when they get it wrong.

6. Support your child by spending regular special time together

Setting aside special quality one-on-one time with your child will show them you value and appreciate them and will increase the connection

between you.

7. Support your child by showing an interest in their activities

By playing with your child you show them you are interested in their activities. This will give them the confidence to explore and make mistakes and will give you an insight into what interests them.

8. Support your child by developing a warm, loving parent-child relationship

When you respond to your child's needs in a warm, loving and consistent manner you strengthen the attachment you have with them. This provides a foundation to allow children to grow confidently and learn to manage their own feelings and behaviours.

9. Support your child to develop good two-way communication

Role modelling good communication skills is essential. Be an active listener, let your child voice their opinion and respond to any questions they may have. Ask questions to show them you understand their viewpoint.

This blog post is an excerpt from the new NACE Essentials guide for parents and carers of children in the early years - now freely available for all families, along with our full guide for parents and carers of children at all ages.

Since Saturday 4th July 2020 there has been live streaming of our parish services. The link is:

<https://www.churchservices.tv/enfield>

Best Wishes

Thank you for your continued support for our school. It is greatly appreciated by all members of our school community and I think helps to create the happy atmosphere we are so fortunate to have in our school.



I wish you well for the remainder of this term as we move now to the end of another school year.

Miss M Creed
Headteacher

June is the Month of the Sacred Heart of Jesus

Ask and you shall receive
Seek and you shall find
Knock and it shall be opened unto you
O Sacred Heart of Jesus I place all my trust in you.



We often take for granted that God loves us. In June we focus specifically on the Heart of Jesus. Jesus is the one who loved us even to the point of dying for us.

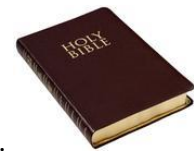
In most cultures the heart is the symbol of love; it is what is deep inside us. We speak of a person having a kind heart or a hard heart.

When the Church was gripped with fear of God's anger, a French sister, St. Margaret Mary Alacoque, was given visions of the Sacred Heart of Jesus in 1673 which assured us that God loves us and that we are to serve without excessive fear. At the same time, we must be careful about sin and pray for those who sin.

Dear Friends, let us love one another because love comes from God. Whoever loves is a child of God and knows God. Whoever does not love, does not know God, for God is love. God showed his love for us by sending his only Son into the world, so that we might have life through him. No one has ever seen God, but if we love one another God lives in us and his love is made perfect in us. (1 John 4:7-9, 11-12)

Love is a word that is much used and often badly used. Love is not just a feeling but it is rather the fact that we do good things for other people, such as forgiving them, helping them, showing them kindness. If we love others, then we can get a better idea of how God loves us. We think of this great love.

The Bible is God's love-letter



to his people.

The cross shows us God's immense love for us.



The chalice reminds us of Jesus' love for us in the Mass



and Holy Communion.

May the love of Jesus surround us.

May the love of Jesus forgive us.

May the love of Jesus help us to love one another.



ADMISSIONS FOR ACADEMIC YEAR 2021/2022

Due to the fact that there are now fewer pupils in London (decrease in the population of children) and the issues with finding affordable housing (as was the case at Christmas and in the spring when a number of our families were moved out of London) we currently have places in our Nursery, Reception and Year 2 2021/22 year groups and some places in some of our other year groups.

Thank you parents for recommending our school and helping to build up our pupil numbers. Please continue to do this. We need your help!

From our School Inspection Reports:

'The leadership team has maintained the good quality of education in the school since the last inspection...Pupils make good progress from their various starting points...Their willingness to come to school is evident in their well above average rates of attendance...You have successfully maintained the above-average attainment by the end of Year 6 in reading,

writing and mathematics...Teachers form good relationships with pupils, providing them with a wealth of interesting activities across the curriculum. Pupils concentrate well in class and are keen to work with each other...Pupils say they feel safe at school and know how to avoid danger in the wider community' (OFSTED Inspection, June 2018).

'A. Classroom religious education is outstanding

- The school has adapted and developed the themes of the Religious Education Curriculum Directory in an excellent manner to meet the learning needs of the pupils of St Mary's.*
- The religious education programme in use fully delivers this content and the use of De Bono system in religious education pushes pupils to develop their understanding further.*
- After carefully analysing the needs of their pupils, the school has developed a curriculum and teaching programme that has reached outstanding achievement by the pupils in religious education.*

- Teachers have high expectations and plan lessons that deepen pupils' religious literacy.*
- Since the last inspection, staff confidence in recording and assessment has been demonstrably achieved with the evidence of the clarity and confidence on the part of the staff in planning imaginative lessons based on the religious education programme followed in the school.*
- The headteacher is also the religious education curriculum coordinator and she takes the closest interest in developing the excellent teaching and learning of religious education in the school.*
- The chair of governors is a recent appointment but with her years of experience on the governing body she is clear in her role of both support and challenge in pursuing the special responsibility of governors of a Catholic school.*

B. The Catholic life of the school is outstanding

- The curriculum fully conforms to the classroom curriculum*

time of at least 10% for religious education and teaching is fully in line with the requirements of the Bishops' Conference.

- The previous inspection asked the school to develop pupils' understanding of Catholic Social Teaching and to help pupils understand the ethics of the market place and fair trade. The school has fully addressed these priorities, both in their classroom teaching and in the encouragement offered when choosing charities to support.
- The pupils of St Mary's enjoy an outstanding experience of prayer, liturgy and Catholic worship.
- Pupils and staff have a deep understanding of the call to 'human flourishing' and are given opportunities to develop and celebrate their gifts and talents.
- Partnership with the parents is excellent; they appreciate and support all that the

school provides for their children.

- The leadership and management of the school are very effective in promoting the Catholic life of the school. The head is strong and devoted in providing both oversight and support on all aspects of Catholic life. The contribution and regular visits of the parish priest provides a strong and stable reinforcement of the foundational position of Catholicism in the life of the school' (OFSTED Section 48 Inspection, September 2019).

ADMISSIONS FOR ACADEMIC YEAR 2022/2023

We need your help to remind friends, neighbours, relatives to apply for places in our Nursery and Reception classes for their children for September 2022!

It is not too late to apply!

